

Rockford Construction, Inc.
Request for Information RFI # Date:

Project: **PARSONS PLACE**

To: Berardi & Partners

From: Rockford Construction, Inc.

Attention: Mike Delorme

Contact: _____

Cc: _____

Phone: _____

Email: _____

Questions or Concerns

Subject:

Plans and/or Spec Pages:

Questions or Concerns:

Suggestions:

Response

Response and/or Action:

Signature: _____

Date: _____



REQUEST FOR INFORMATION
RFI ST- 2

DATE: 7/22/2019

TO: _____

ATTENTION: Larry

RE: Parsons Place

JOB NO: 18-869

SUBJECT: Rim board for floors - Heel heights for trusses

DRAWING REFERENCE: A603

QUESTION:

Drawings specify rim board for floor trusses and does not tell thickness of rim board - Please advise

Drawings show cross section at .25 pitched roof planes but does not indicate heel height dimension - Please advise

ANSWER:

REMARKS

SIGNED: Bill George

c.c.

The required RFI answer may impact completion of component shop drawings.

A complete response is requested in:

24 hours

48 hours

1-week

CORNICE SUPPORT
FRAMING @ 24" O.C. -
2x4'S LAID FLAT /
SCREWED TOGETHER
WITH 1-1/2 X 1/4" ANGLE
BRACING EA SUPPORT

TYPCON CORNICE MOLDING
MJD512-16-P / GLE AND
NAIL TO 2X FRAMING

CONTINUOUS 3/4" PVC /
SURFACE PREPPED AND (2)
COATS KRYLON FUSION PER
MANUFACTURES INSTRUCTIONS
CONTINUOUS DBL 2x8 ALUMINUM
WRAPPED FRIEZE

ALUMINUM WRAPPED 1x4 CONTINUOUS
CORNICE FACE FRAME / 5/4" HARDI
TRIM ALT -REFER TO ELEVATIONS

12" SQUARE 3/4" PVC WITH
CHAMFERED EDGES / SURFACE
PREPPED AND (2) COATS
KRYLON FUSION PER
MANUFACTURES INSTRUCTIONS

FACTORY PRIMED FIELD PAINTED
HORIZONTAL SMOOTH HARDI-PANEL ON
7/16" HOUSEWRAPPED OSB SHEATHING

HEMMED FLASHINGS SET IN A
FULL BED OF SEALANT PER
MFG. RECOMMENDATIONS

3/4" CONTINUOUS PROJECTED
BRICK SOLDIER COURSE BAND

BACKER ROD AND SEALANT
KEEP HOLES - 2 @ SINGLE
WINDOW 3 @ DBL WINDOWS

PAINTED STEEL ANGLE L INTEL

HEMMED FLASHINGS SET IN A
FULL BED OF SEALANT PER
MFG. RECOMMENDATIONS

5/8" OSB SHEATHING

7/16" OSB SHEATHING

1/4" @ 0"

5/8" OSB
SHEATHING

3/4"

TRUSS BRG. HT.
EL. 12'-0" @ 1/8"

5/8" TYPE 'X' GYPSUM BOARD ON
DIETRICH RC DELUXE RESILIENT METAL
CHANNELS @ 16" O.C. / RC ASSURANCE
HARDWARE TYPICAL
INSULATION BATTLES TYPICAL

BLOWN IN INSULATION REFER
TO SHEET A002
SIMPSON TRUSS ANCHOR
NO. H25A EA. TRUSS

SPECIFIED
ROOFING ON
RIGID INEL.
SLOPED 1/4" PER
LIN. FT. TO DRAIN
MIN. / SYSTEM
AND ANCILLARY
FEATURES TO BE
INSTALLED PER
MANUFACTURES
INSTRUCTIONS

ENGINEERED
WOOD TRUSSES @
24" O.C. / REFER
TO STRUCTURAL
DRAWINGS FOR
ADDITIONAL
INFORMATION

5'-0"
DRD. ACTUAL
WINDOW H'G.

CORNICE SUPPORT
FRAMING @ 24" O.C. -
2x4'S LAID FLAT /
SCREWED TOGETHER
WITH 1-1/2 X 1/4" ANGLE
BRACING EA SUPPORT

TYPCON CORNICE MOLDING
MJD512-16-P / GLE AND
NAIL TO 2X FRAMING

CONTINUOUS 3/4" PVC /
SURFACE PREPPED AND (2)
COATS KRYLON FUSION PER
MANUFACTURES INSTRUCTIONS
CONTINUOUS DBL 2x8 ALUMINUM
WRAPPED FRIEZE

ALUMINUM WRAPPED 1x4 CONTINUOUS
CORNICE FACE FRAME / 5/4" HARDI
TRIM ALT -REFER TO ELEVATIONS

12" SQUARE 3/4" PVC WITH
CHAMFERED EDGES / SURFACE
PREPPED AND (2) COATS
KRYLON FUSION PER
MANUFACTURES INSTRUCTIONS

FACTORY PRIMED FIELD PAINTED
HORIZONTAL SMOOTH HARDI-PANEL ON
7/16" HOUSEWRAPPED OSB SHEATHING

HEMMED FLASHINGS SET IN A
FULL BED OF SEALANT PER
MFG. RECOMMENDATIONS

3/4" CONTINUOUS PROJECTED
BRICK SOLDIER COURSE BAND

BACKER ROD AND SEALANT
KEEP HOLES - 2 @ SINGLE
WINDOW 3 @ DBL WINDOWS

PAINTED STEEL ANGLE L INTEL

HEMMED FLASHINGS SET IN A
FULL BED OF SEALANT PER
MFG. RECOMMENDATIONS

5/8" OSB SHEATHING

7/16" OSB SHEATHING

1/4" @ 0"

5/8" OSB
SHEATHING

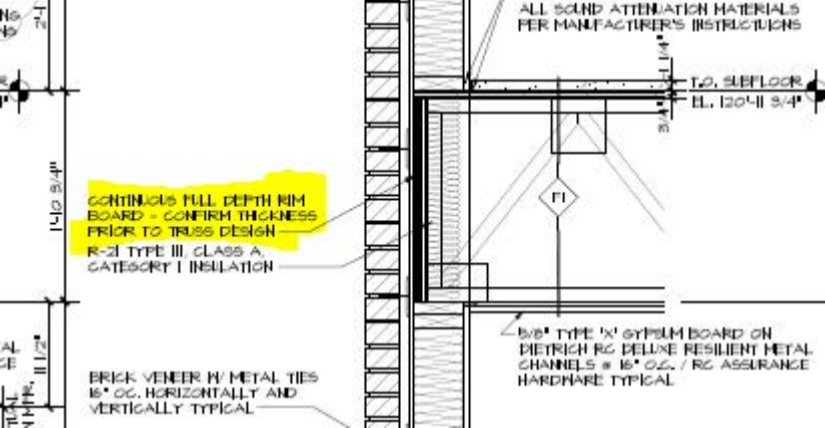
SPECIFIED ROOFING ON RIGID
INEL. SLOPED 1/4" PER LIN. FT.
TO DRAIN MIN. / SYSTEM
AND ANCILLARY FEATURES TO BE
INSTALLED PER
MANUFACTURES INSTRUCTIONS

ENGINEERED WOOD TRUSSES @
24" O.C. / REFER
TO STRUCTURAL
DRAWINGS FOR
ADDITIONAL
INFORMATION

TRUSS BRG. HT.
EL. 12'-0" @ 1/8"

5/8" TYPE 'X' GYPSUM BOARD ON
DIETRICH RC DELUXE RESILIENT METAL
CHANNELS @ 16" O.C. / RC ASSURANCE
HARDWARE TYPICAL
INSULATION BATTLES TYPICAL

BLOWN IN INSULATION REFER
TO SHEET
A002
SIMPSON TRUSS ANCHOR NO. H25A EA.
TRUSS



ALL SOUND ATTENUATION MATERIALS
PER MANUFACTURER'S INSTRUCTIONS

T.O. SUBFLOOR
EL. 120'4 3/4"

14'-0 3/4"

CONTINUOUS FULL DEPTH RIM
BOARD - CONFIRM THICKNESS
PRIOR TO TRUSS DESIGN

R-21 TYPE III, CLASS A,
CATEGORY I INSULATION

BRICK VENEER W/ METAL TIES
16" OC. HORIZONTALLY AND
VERTICALLY TYPICAL

5/8" TYPE 'X' GYPSUM BOARD ON
DIETRICH RC DELUXE RESILIENT METAL
CHANNELS @ 16" OC. / RC ASSURANCE
HARDWARE TYPICAL

TOTAL
HEIGHT, 11 1/2"